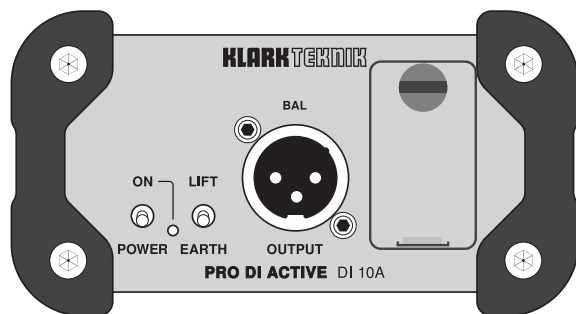
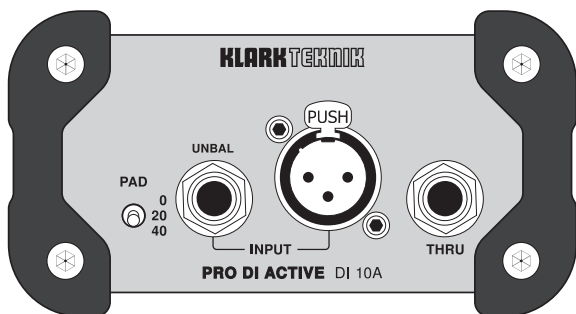


# PRO DI ACTIVE DI 10A

Active DI Box with MIDAS Transformer, Extended Dynamic Range and Phantom/Battery Operation



**PAD** – switch incrementally reduces the INPUT gain sensitivity to handle unusually loud input signals. The PAD switch offers gain reduction settings of 0 dB (guitar), 20 dB (line) or 40 dB (speaker).

**INPUT** – connections accept balanced and unbalanced signals over cables with ¼" TRS, ¼" TS or XLR plugs.

**THRU** – output sends out a copy of the INPUT signal and accepts connections from cables with ¼" TRS or ¼" TS plugs.

**POWER** – switch turns the unit on and off.

**ON** – LED lights up to indicate the following conditions:

- battery power active = LED blinks
- battery power off = LED off
- phantom power active = LED lights without blinking

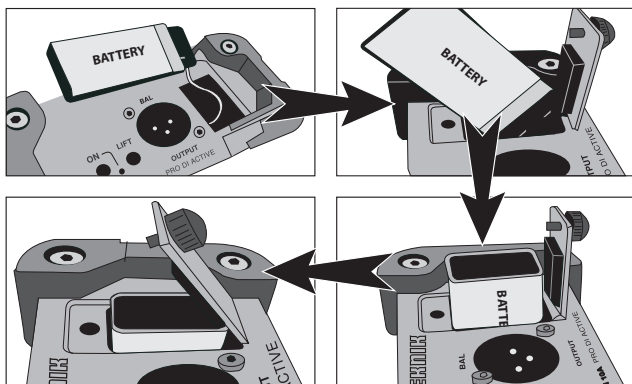
**LIFT / EARTH** – switch can be used to connect or disconnect the ground link between the INPUT and OUTPUT jacks in order to reduce hum or prevent ground loops. The LIFT / EARTH switch's ability to reduce hum or prevent ground loops depends on the grounding of connected devices. When the switch is in the LIFT position, the ground connection between INPUT and OUTPUT is disconnected.

**OUTPUT** – XLR jack sends out a balanced version of the INPUT signal to your mixing board or other processing device.

**BATTERY COMPARTMENT** – contains the 9 V battery used to power the unit. Loosen the screw to open the compartment and replace the battery.

**NOTE:** In the event that phantom power fails, the unit will automatically switch to battery power.

## How to insert the battery



## Specifications

Audio Connections	
Input	1 x XLR, balanced 1 x ¼" TS, unbalanced
Input Impedance	> 250 kΩ
Thru	1 x ¼" TS, unbalanced
Output	1 x XLR, balanced
Load Impedance	> 600 Ω
Maximum Input level	+10 / +30 / +50 dBu
System	
Frequency Response	10 Hz to 90 kHz, ±3 dB
THD+N	< 0.02 % @ 1 kHz, 0 dBu
Noise Level	< -112 dBu
PAD Switch	0 / -20 / -40 dB
Power Supply	
Phantom power	18 V DC to 48 V DC
Battery	9 V Blockcell 6LR61
Dimension / Weight	
Dimensions (W x D x H)	118 x 120 x 64 mm (4.6 x 4.7 x 2.5")
Weight	0.56 kg (1.2 lbs)

## LEGAL DISCLAIMER

MUSIC Tribe accepts no liability for any loss which may be suffered by any person who relies either wholly or in part upon any description, photograph, or statement contained herein. Technical specifications, appearances and other information are subject to change without notice. All trademarks are the property of their respective owners. MIDAS, KLARK TEKNIK, LAB GRUPPEN, LAKE, TANNOY, TURBOSOUND, TC ELECTRONIC, TC HELICON, BEHRINGER, BUGERA and COOLAUDIO are trademarks or registered trademarks of MUSIC Group IP Ltd. © MUSIC Group IP Ltd. 2018 All rights reserved.

## LIMITED WARRANTY

For the applicable warranty terms and conditions and additional information regarding MUSIC Tribe's Limited Warranty, please see complete details online at [music-group.com/warranty](http://music-group.com/warranty).

# KLARKTEKNIK